

**SSH3 Antibody (C-term)**  
**Affinity Purified Rabbit Polyclonal Antibody (Pab)**  
**Catalog # AP11697b**

**Specification**

---

**SSH3 Antibody (C-term) - Product Information**

Application	IF, FC, IHC-P, WB,E
Primary Accession	<a href="#">Q8TE77</a>
Other Accession	<a href="#">NP_060327.3</a>
Reactivity	Human
Host	Rabbit
Clonality	Polyclonal
Isotype	Rabbit IgG
Calculated MW	72996
Antigen Region	575-602

**SSH3 Antibody (C-term) - Additional Information**

**Gene ID** 54961

**Other Names**

Protein phosphatase Slingshot homolog 3, SSH-like protein 3, SSH-3L, hSSH-3L, SSH3, SSH3L

**Target/Specificity**

This SSH3 antibody is generated from rabbits immunized with a KLH conjugated synthetic peptide between 575-602 amino acids from the C-terminal region of human SSH3.

**Dilution**

IF~~1:10~50  
FC~~1:10~50  
IHC-P~~1:50~100  
WB~~1:1000  
E~~Use at an assay dependent concentration.

**Format**

Purified polyclonal antibody supplied in PBS with 0.09% (W/V) sodium azide. This antibody is purified through a protein A column, followed by peptide affinity purification.

**Storage**

Maintain refrigerated at 2-8°C for up to 2 weeks. For long term storage store at -20°C in small aliquots to prevent freeze-thaw cycles.

**Precautions**

SSH3 Antibody (C-term) is for research use only and not for use in diagnostic or therapeutic procedures.

**SSH3 Antibody (C-term) - Protein Information**

**Name** SSH3

**Synonyms** SSH3L

**Function** Protein phosphatase which may play a role in the regulation of actin filament dynamics. Can dephosphorylate and activate the actin binding/depolymerizing factor cofilin, which subsequently binds to actin filaments and stimulates their disassembly (By similarity).

**Cellular Location**

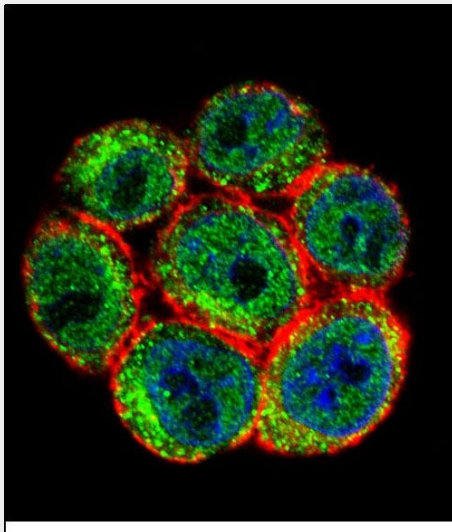
Cytoplasm, cytoskeleton. Nucleus

### SSH3 Antibody (C-term) - Protocols

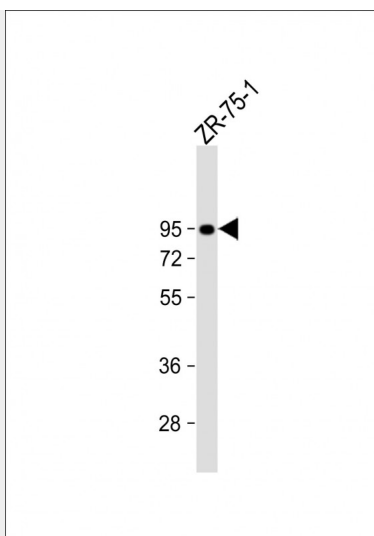
Provided below are standard protocols that you may find useful for product applications.

- [Western Blot](#)
- [Blocking Peptides](#)
- [Dot Blot](#)
- [Immunohistochemistry](#)
- [Immunofluorescence](#)
- [Immunoprecipitation](#)
- [Flow Cytometry](#)
- [Cell Culture](#)

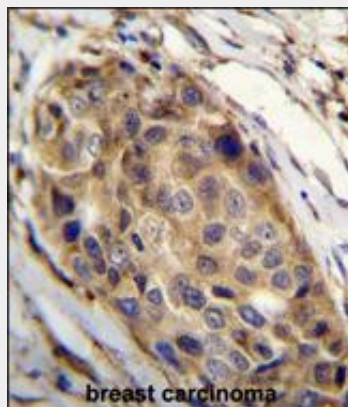
### SSH3 Antibody (C-term) - Images



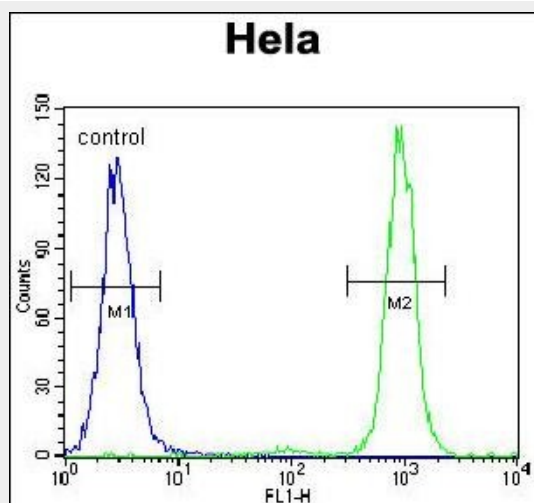
Confocal immunofluorescent analysis of SSH3 Antibody (C-term)(Cat#AP11697b) with HeLa cell followed by Alexa Fluor 488-conjugated goat anti-rabbit IgG (green). Actin filaments have been labeled with Alexa Fluor555 phalloidin (red). DAPI was used to stain the cell nuclear (blue).



Anti-SSH3 Antibody (C-term) at 1:1000 dilution + ZR-75-1 whole cell lysate Lysates/proteins at 20 µg per lane. Secondary Goat Anti-Rabbit IgG, (H+L), Peroxidase conjugated at 1/10000 dilution. Predicted band size : 73 kDa Blocking/Dilution buffer: 5% NFDM/TBST.



SSH3 Antibody (C-term) (Cat. #AP11697b) immunohistochemistry analysis in formalin fixed and paraffin embedded human breast carcinoma followed by peroxidase conjugation of the secondary antibody and DAB staining. This data demonstrates the use of SSH3 Antibody (C-term) for immunohistochemistry. Clinical relevance has not been evaluated.



SSH3 Antibody (C-term) (Cat. #AP11697b) flow cytometric analysis of HeLa cells (right histogram)

compared to a negative control cell (left histogram).FITC-conjugated goat-anti-rabbit secondary antibodies were used for the analysis.

### **SSH3 Antibody (C-term) - Background**

The ADF (actin-depolymerizing factor)/cofilin family (see MIM 601442) is composed of stimulus-responsive mediators of actin dynamics. ADF/cofilin proteins are inactivated by kinases such as LIM domain kinase-1 (LIMK1; MIM 601329). The SSH family appears to play a role in actin dynamics by reactivating ADF/cofilin proteins in vivo (Niwa et al., 2002 [PubMed 11832213]).

### **SSH3 Antibody (C-term) - References**

Kousaka, K., et al. Genesis 46(5):246-255(2008)  
Kligys, K., et al. J. Biol. Chem. 282(44):32520-32528(2007)  
Beausoleil, S.A., et al. Nat. Biotechnol. 24(10):1285-1292(2006)  
Soosairajah, J., et al. EMBO J. 24(3):473-486(2005)  
Ohta, Y., et al. Genes Cells 8(10):811-824(2003)